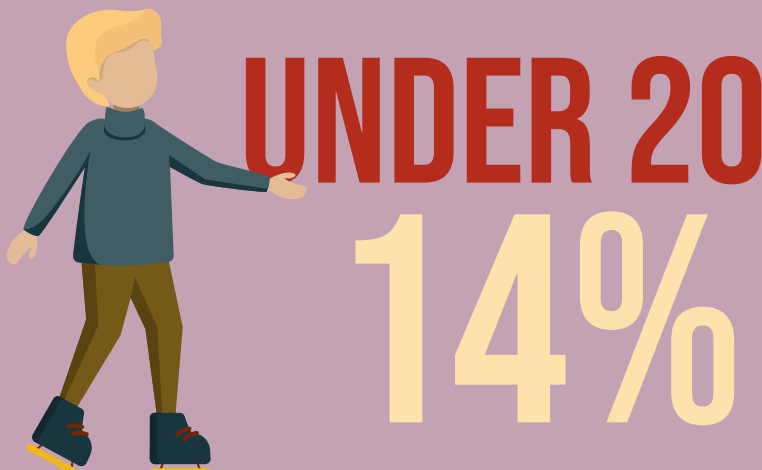
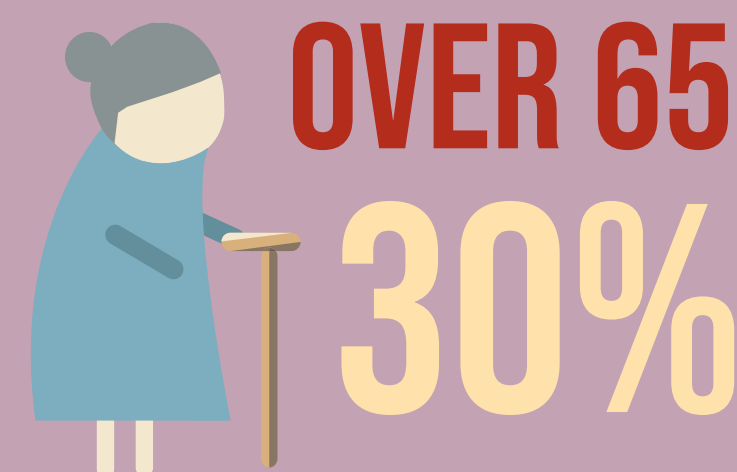
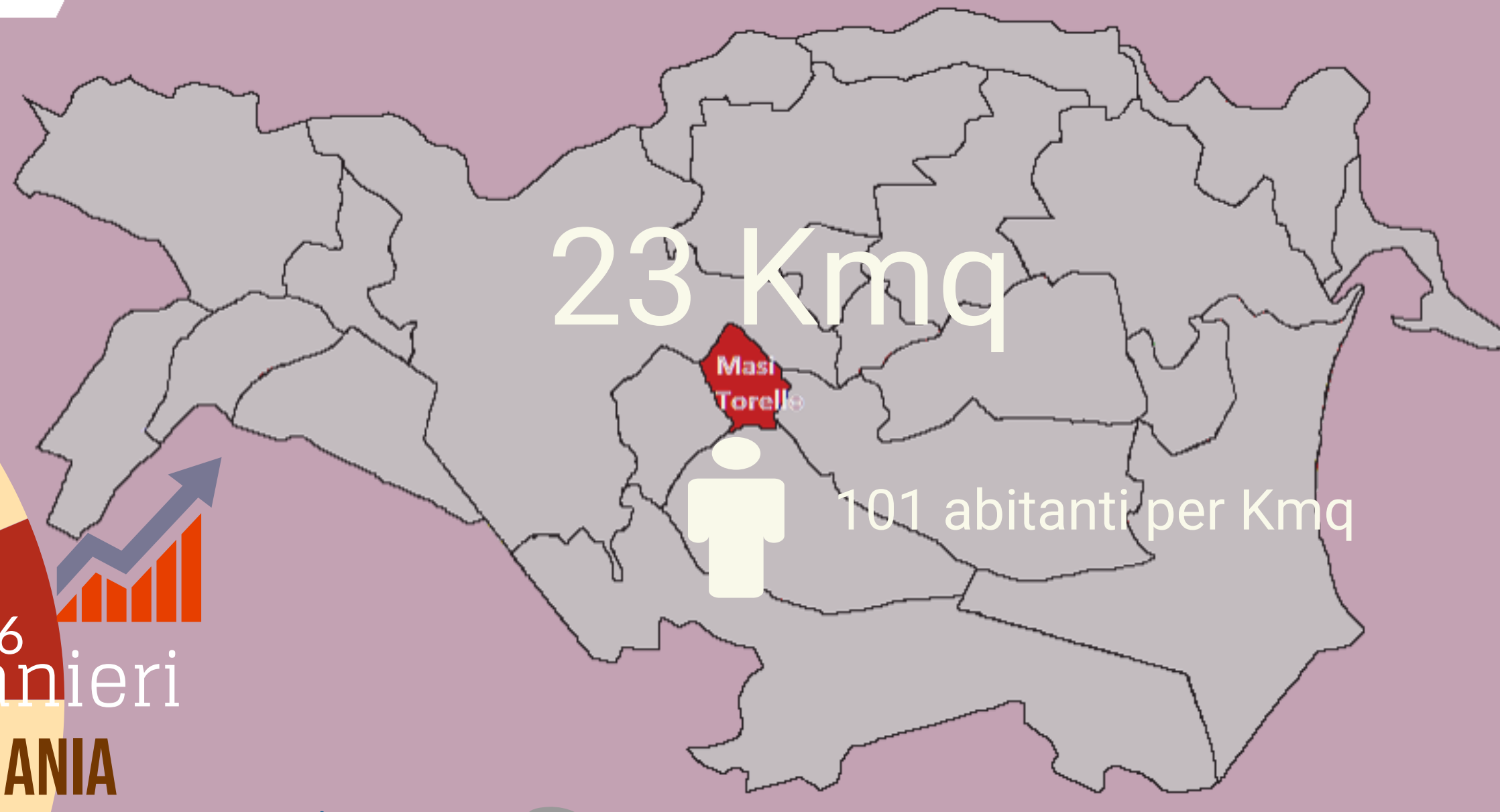
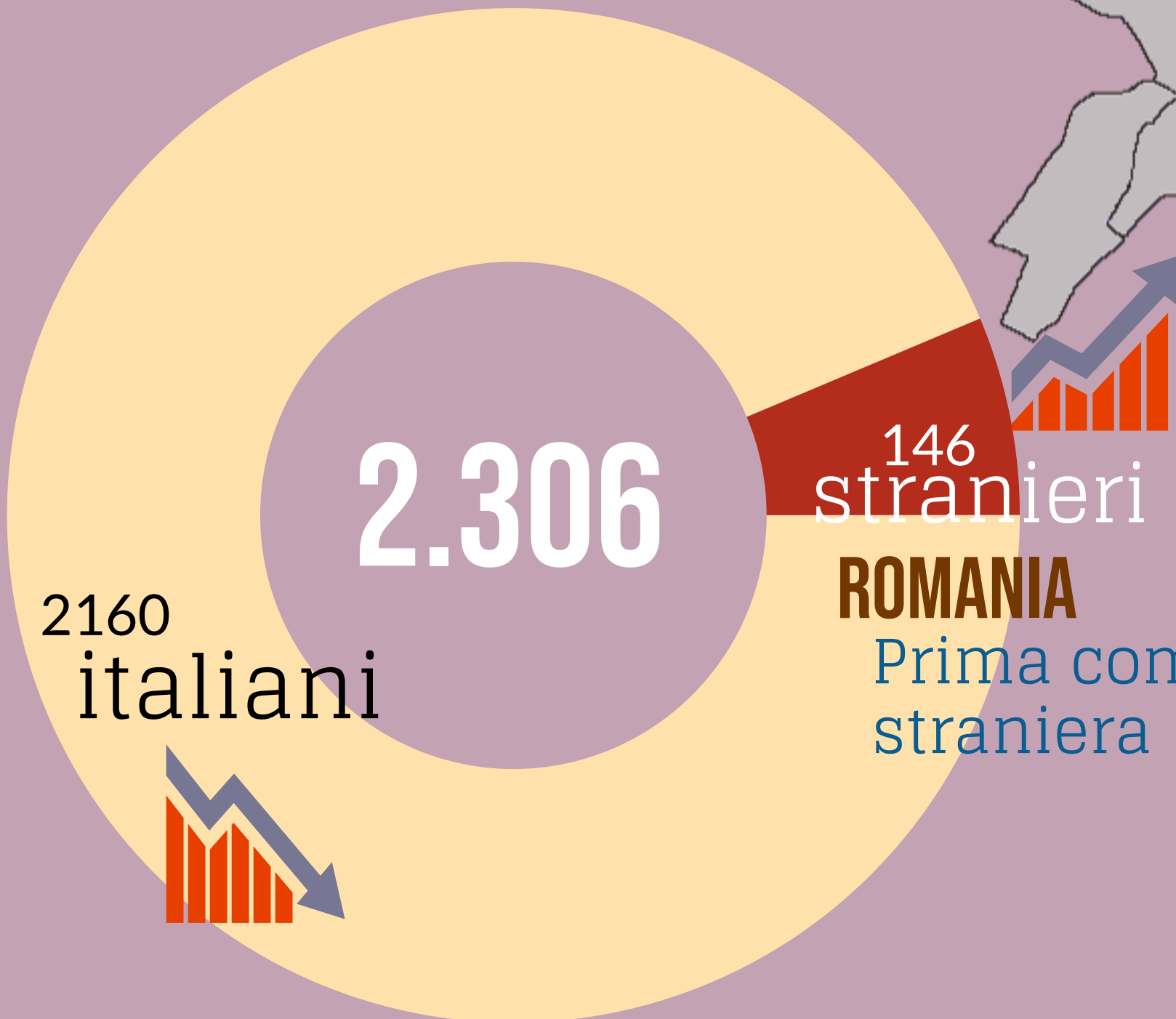


Camera di Commercio  
Ferrara

# MASI TORELLO

ANNO 2020

## POPOLAZIONE



**ROMANIA**  
Prima comunità straniera



**270** **OGNI**  
**ANZIANI**  
> 65 anni

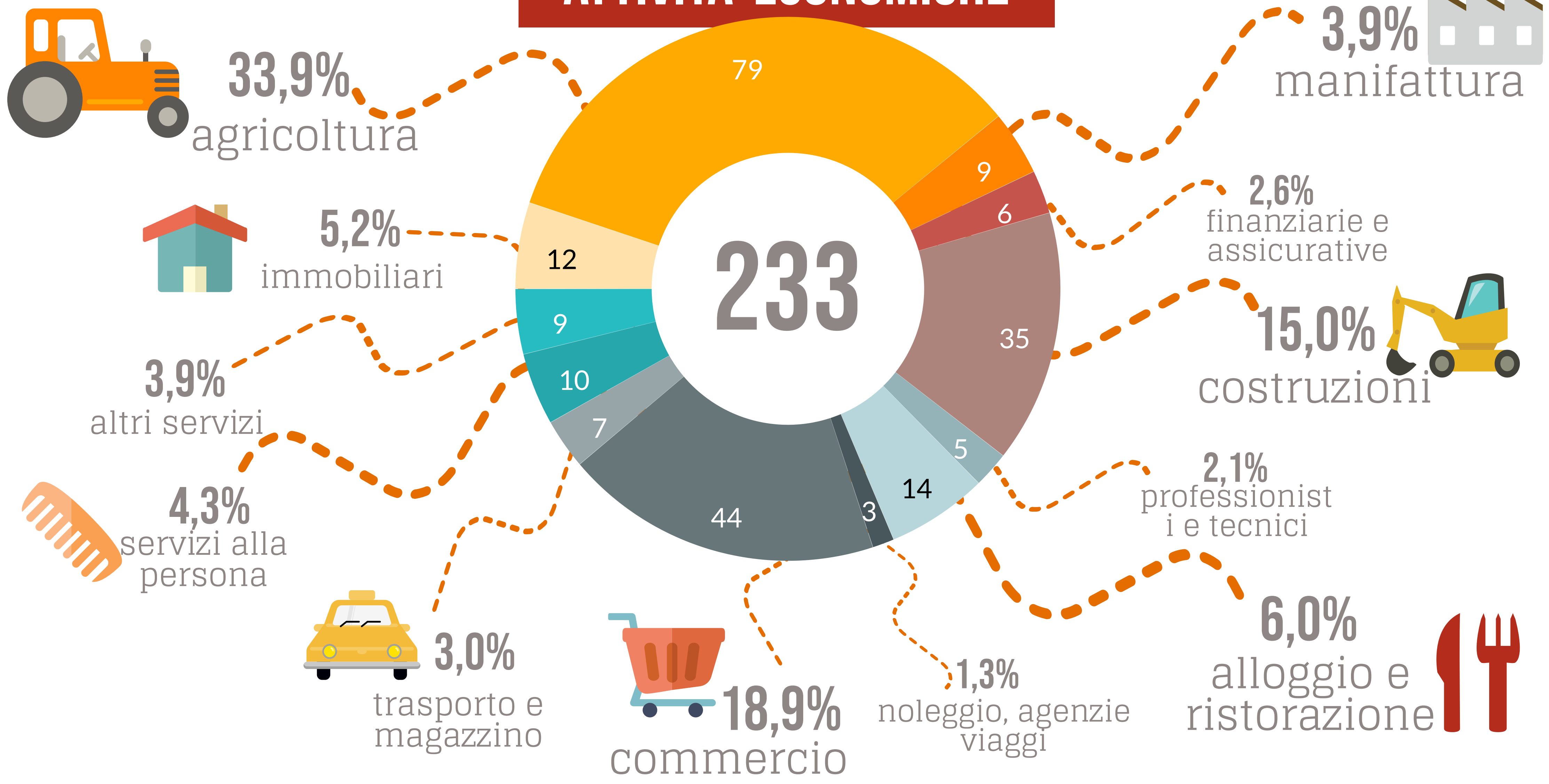
**100**  
**GIOVANI**  
< 15 anni



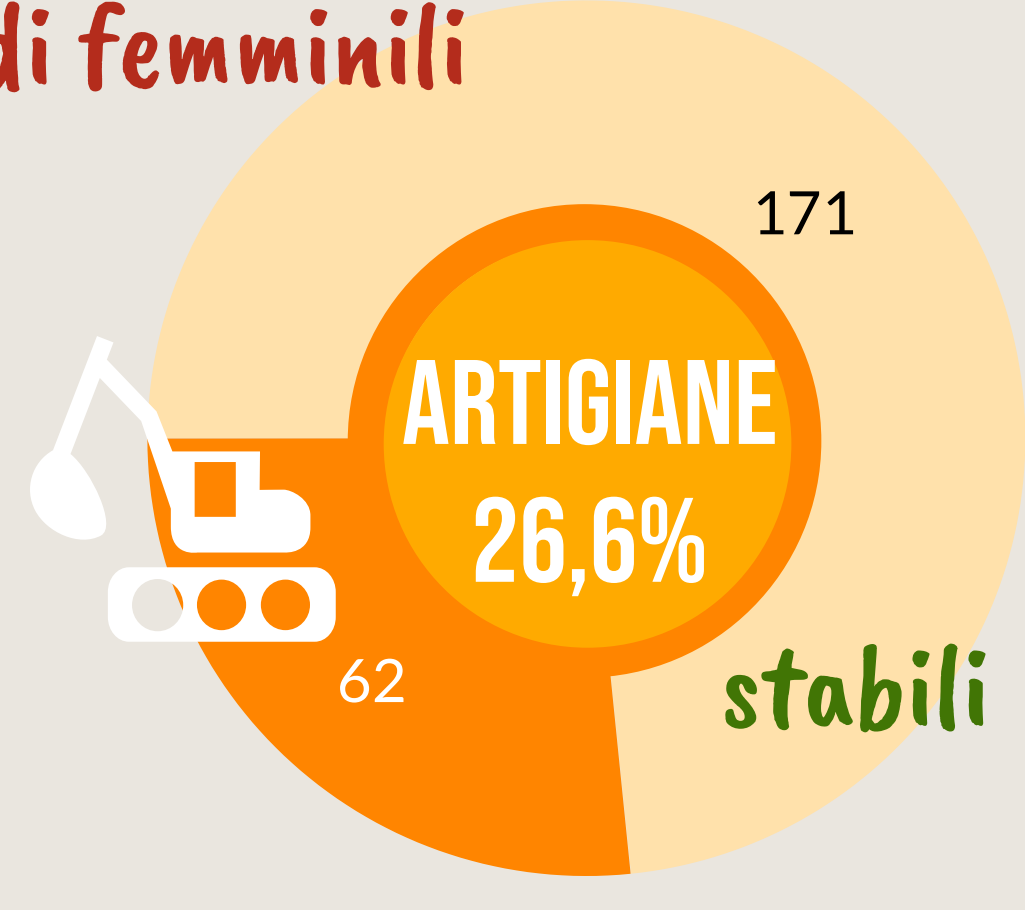
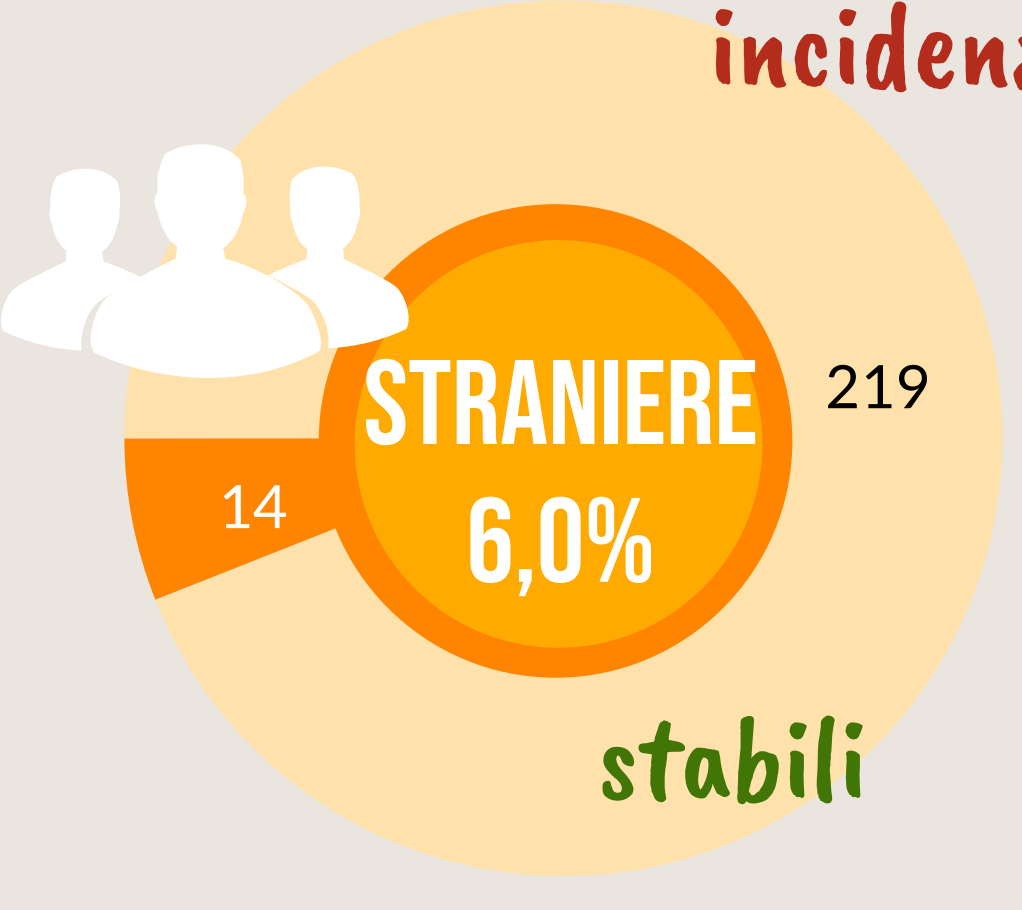
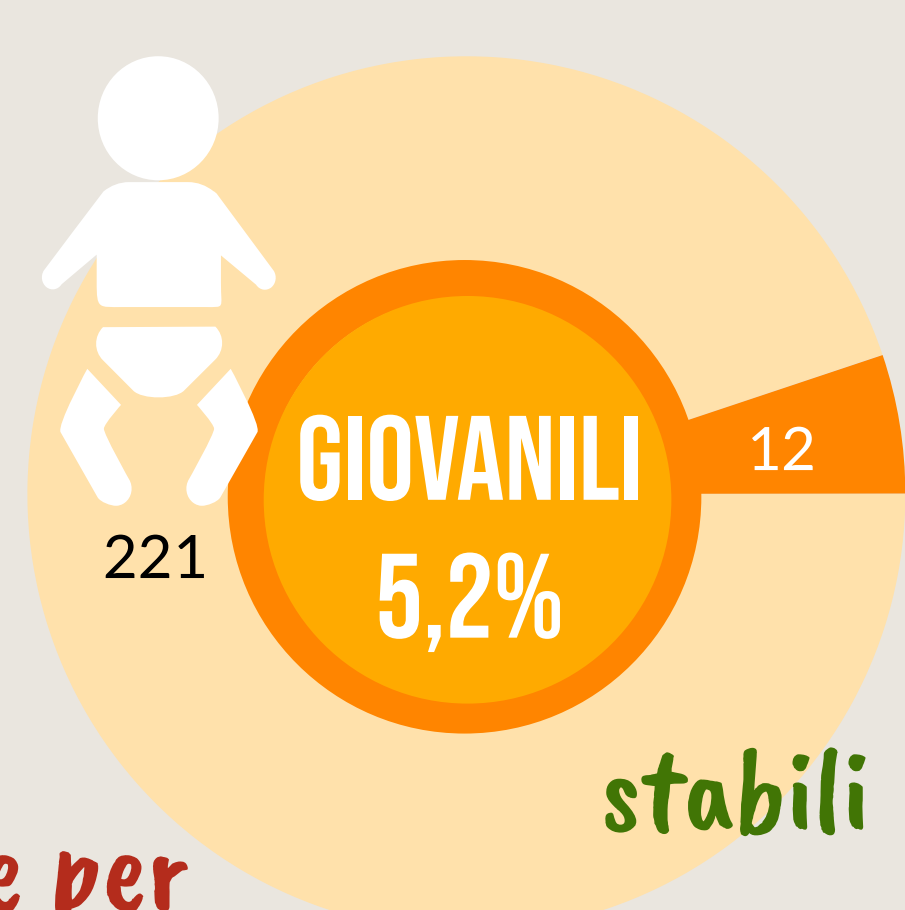
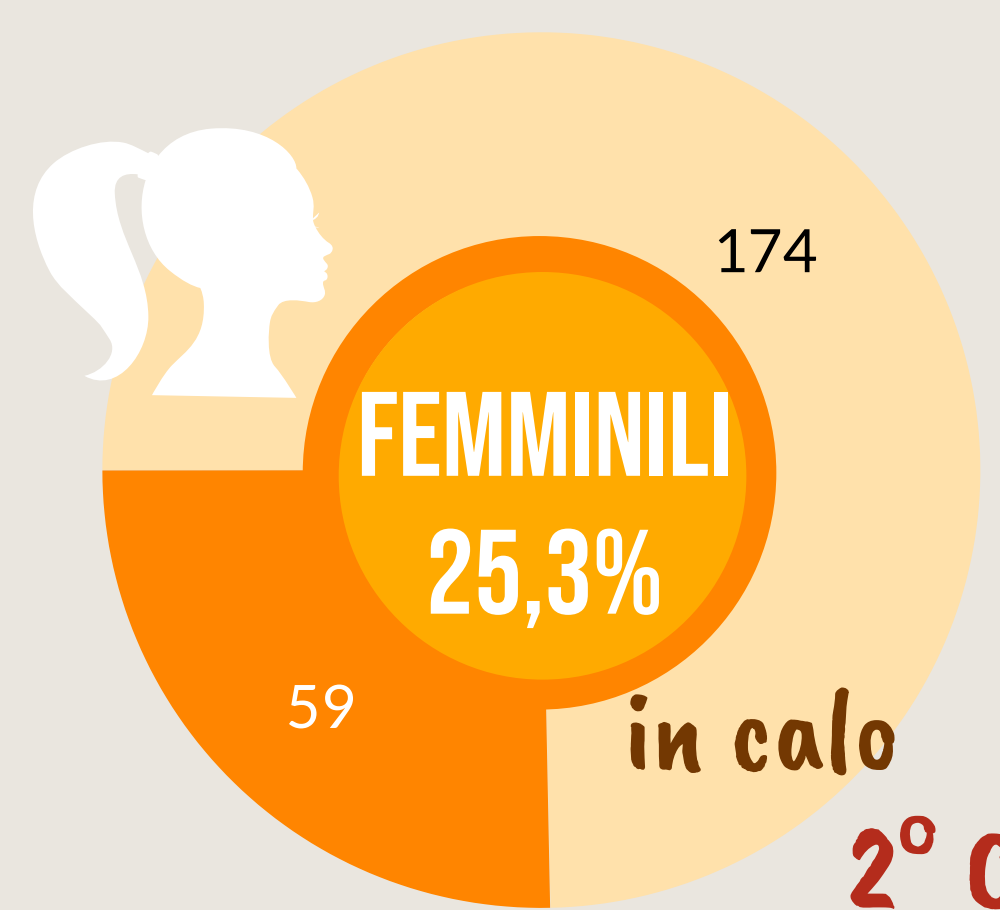
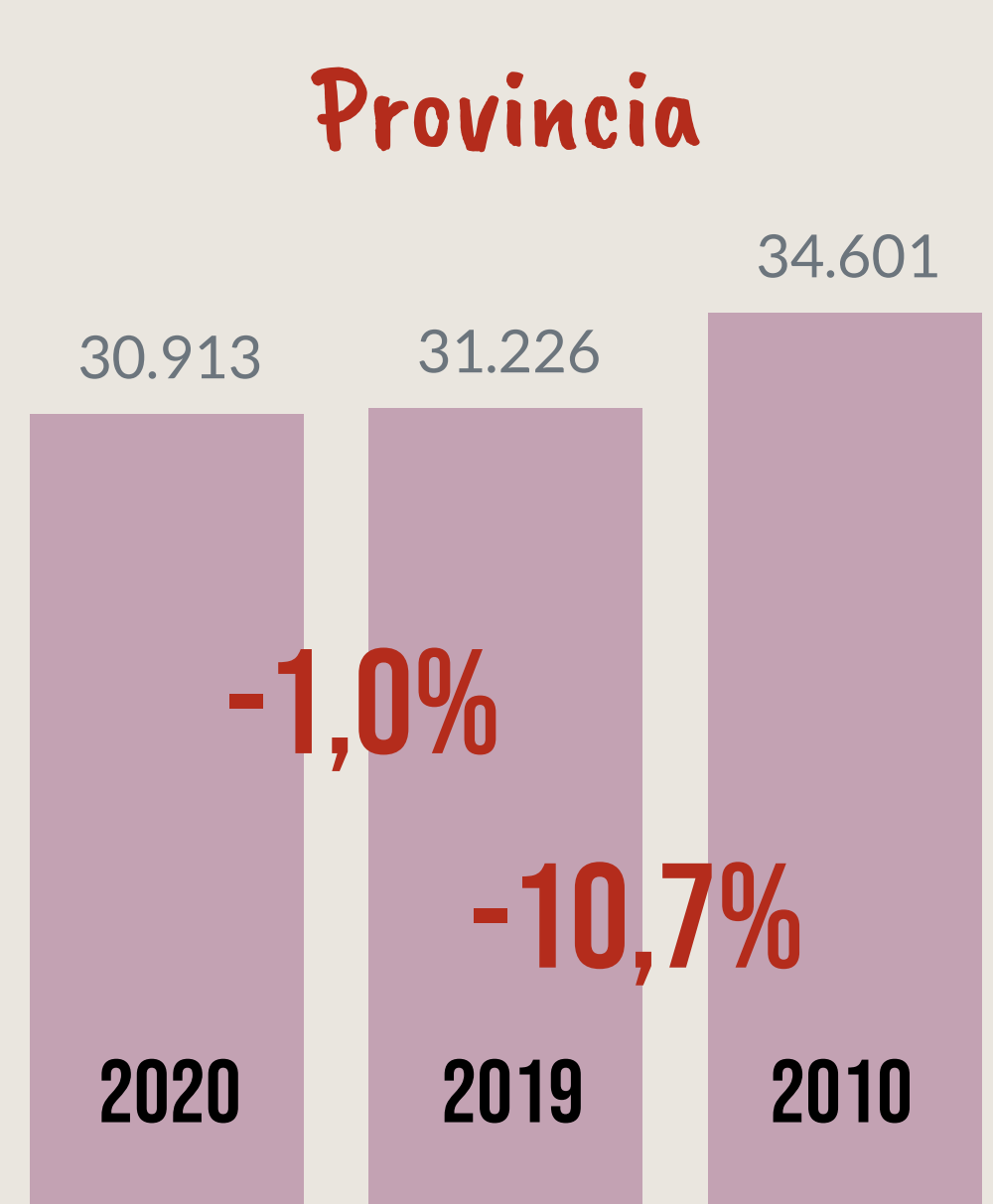
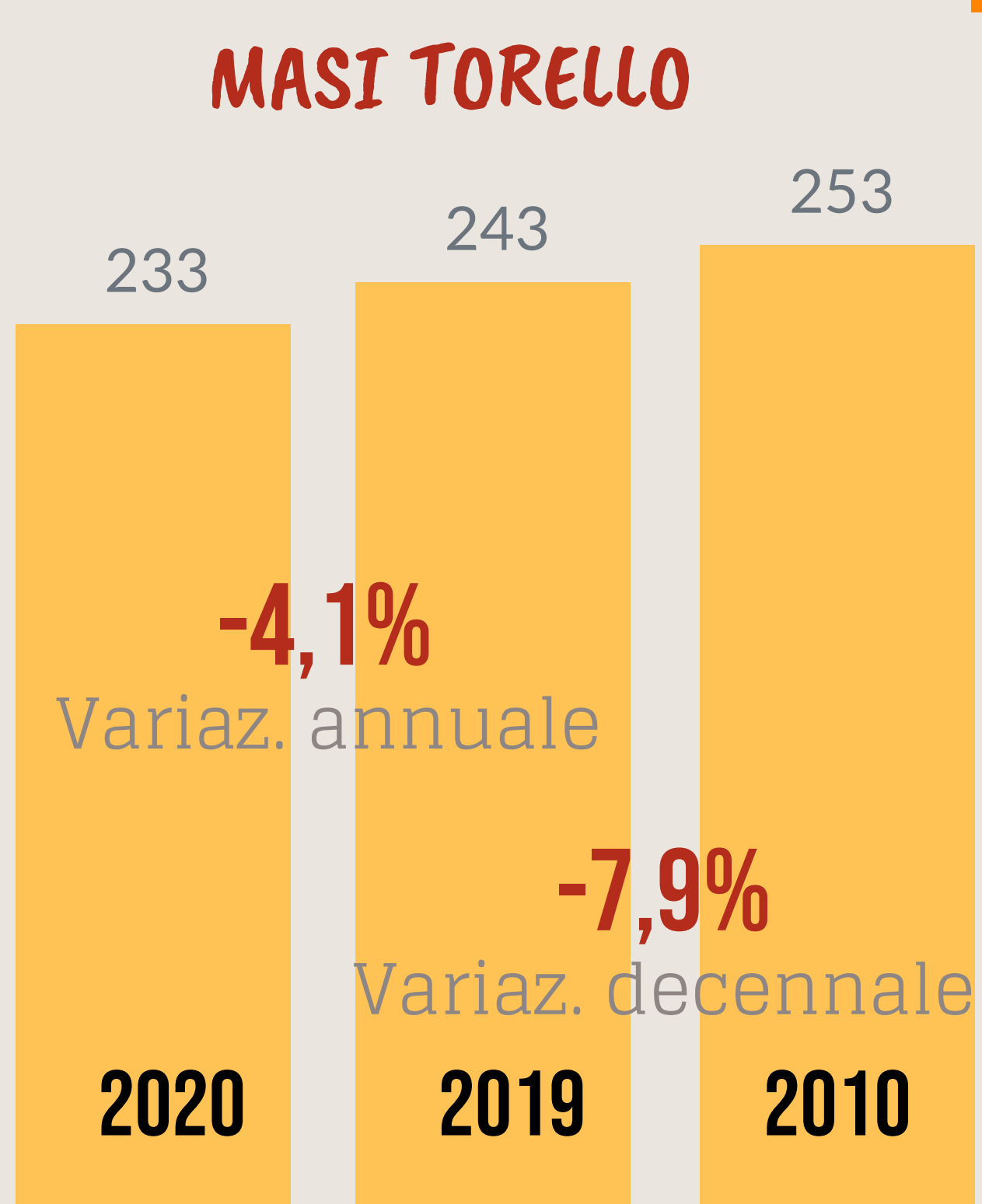
La media provinciale è 262 ogni 100

Dati InfoCamere - Imprese Attive al 31/12/2020

## ATTIVITA' ECONOMICHE



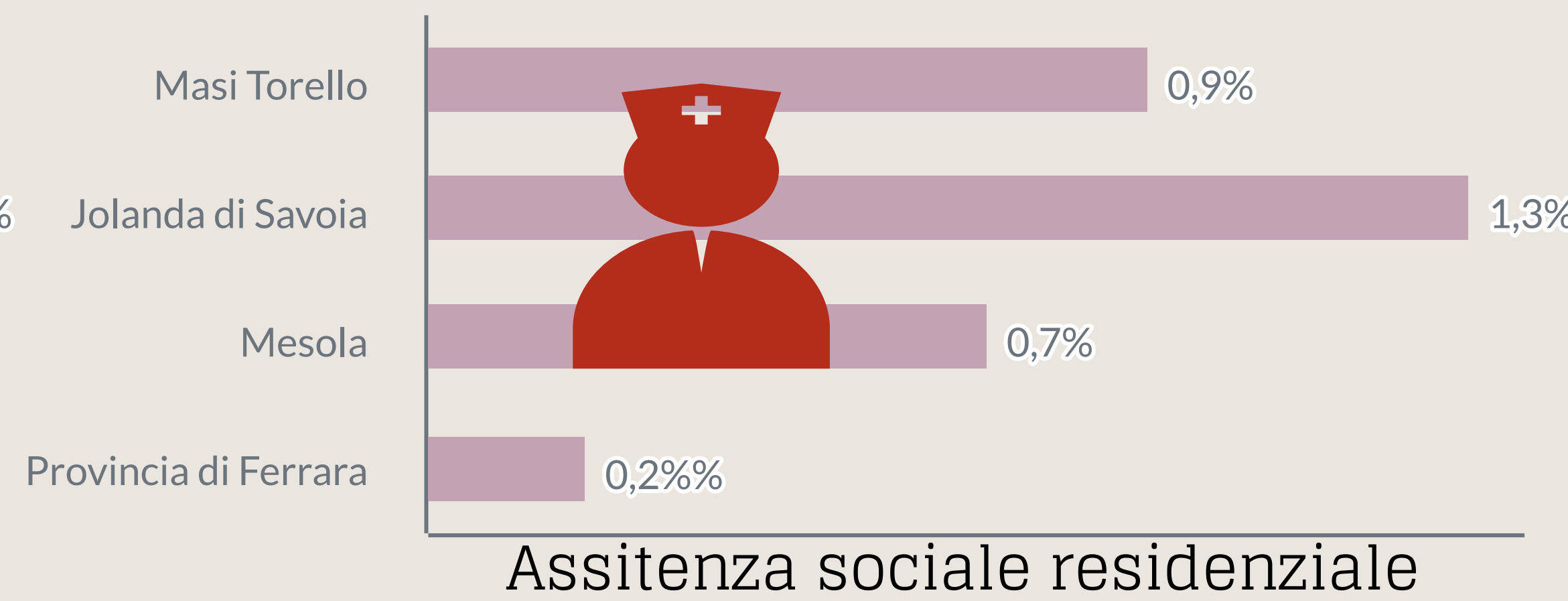
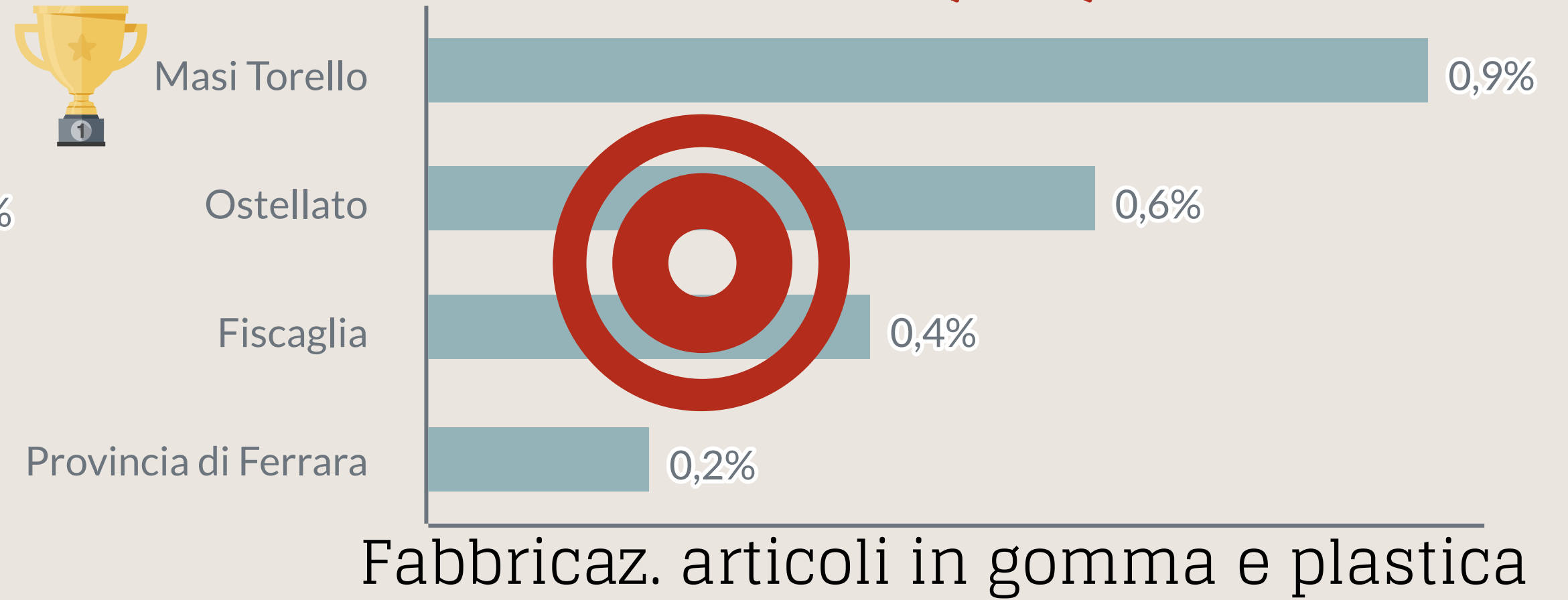
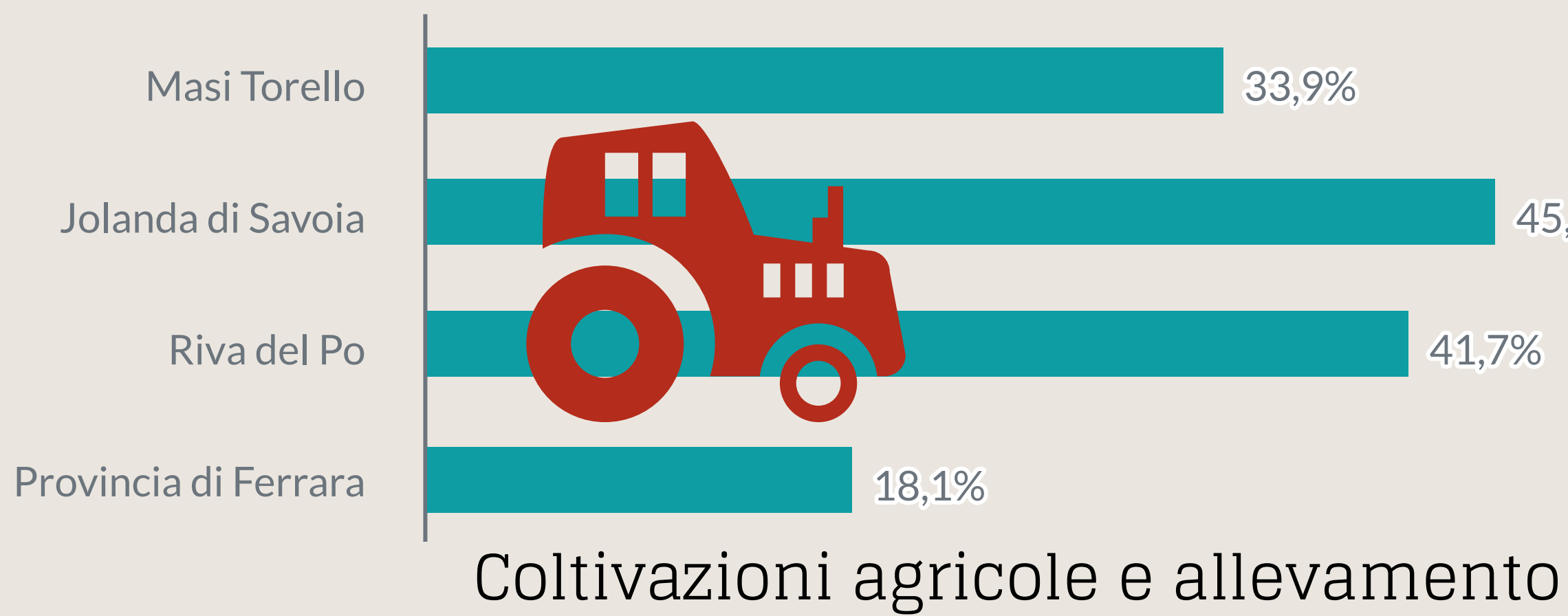
## IMPRESE



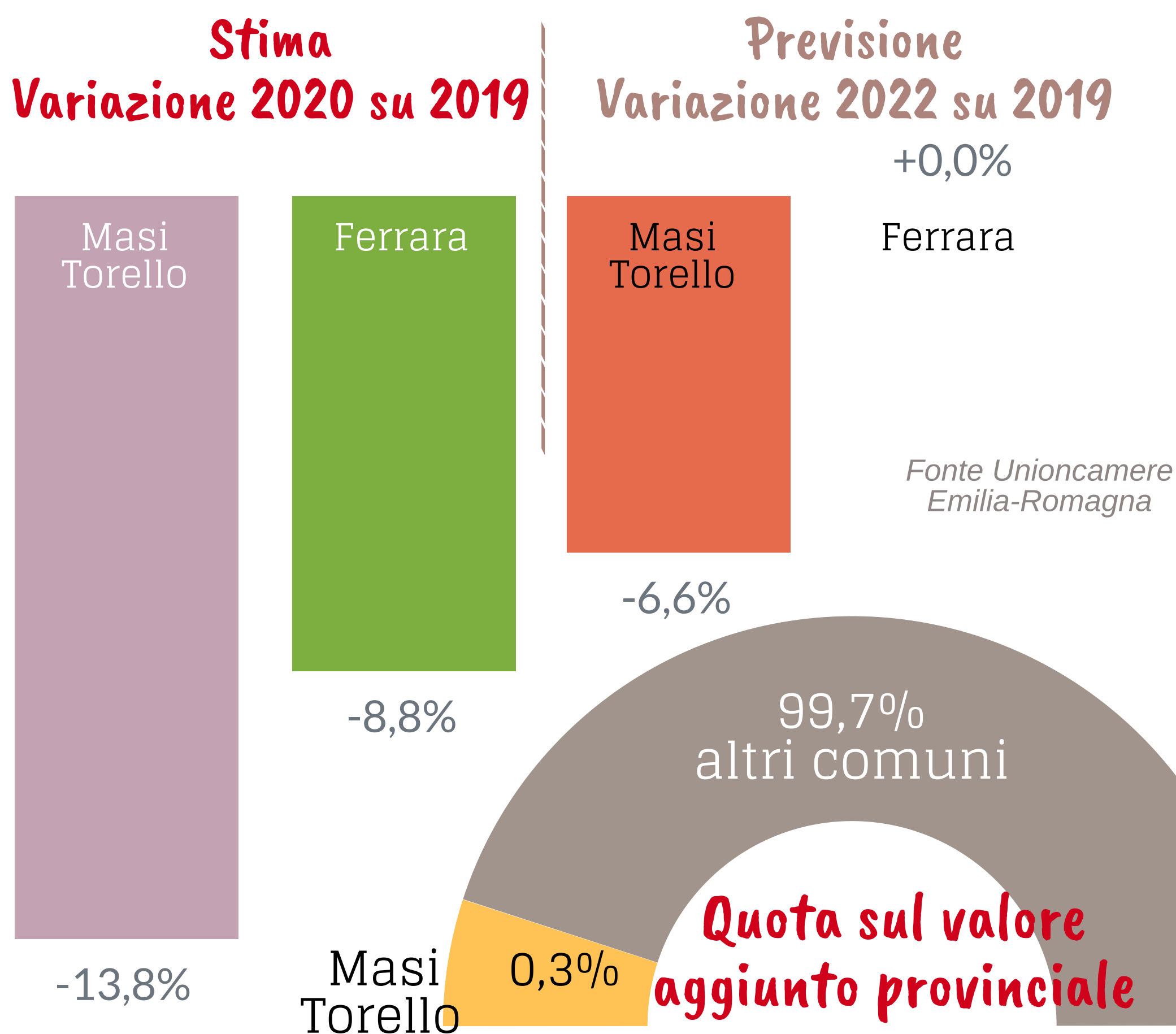
2° Comune per incidenza di femminili

# ATTIVITA' A CONFRONTO

% di imprese di Masi Torello rispetto ai comuni più specializzati

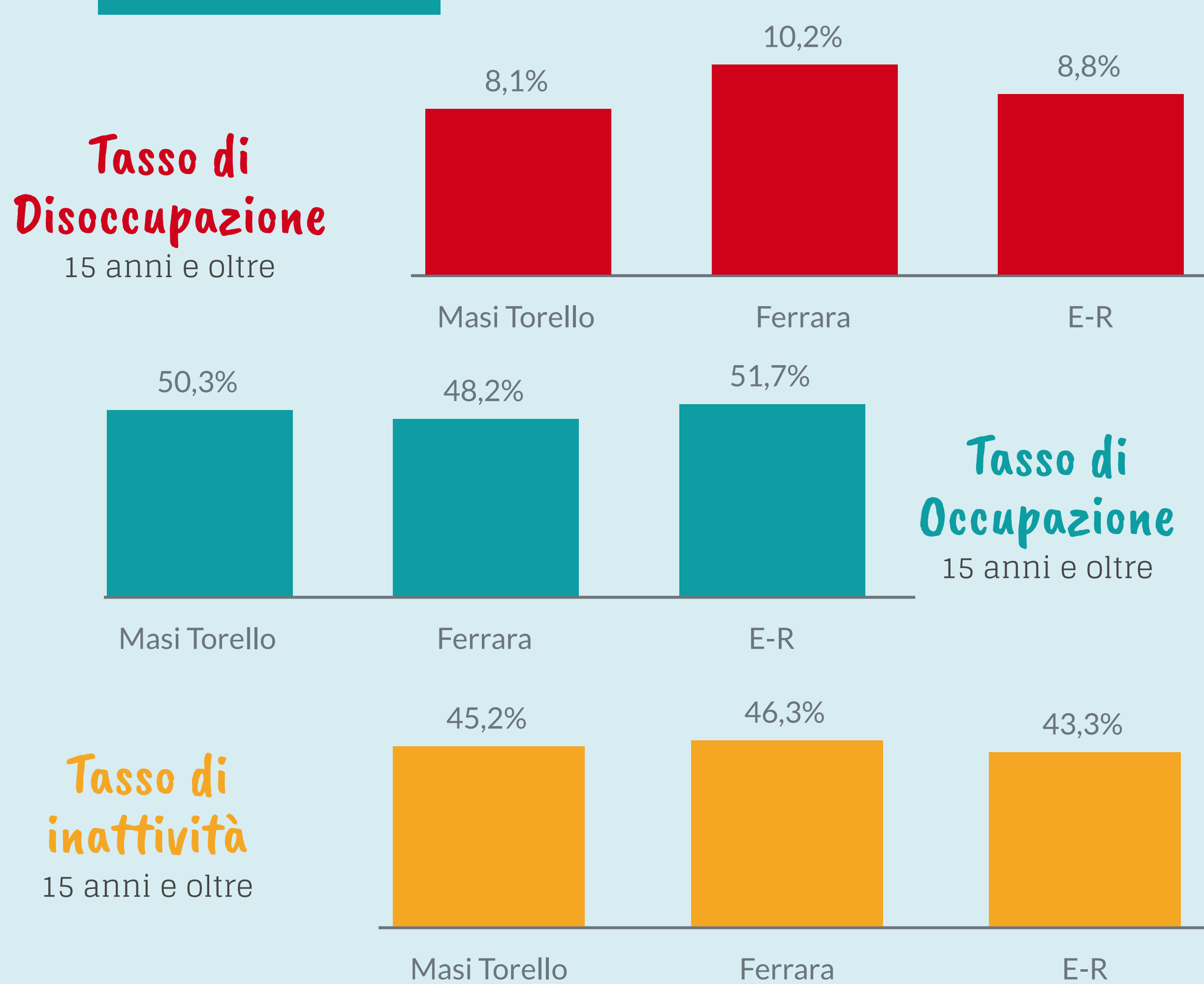


## VALORE AGGIUNTO

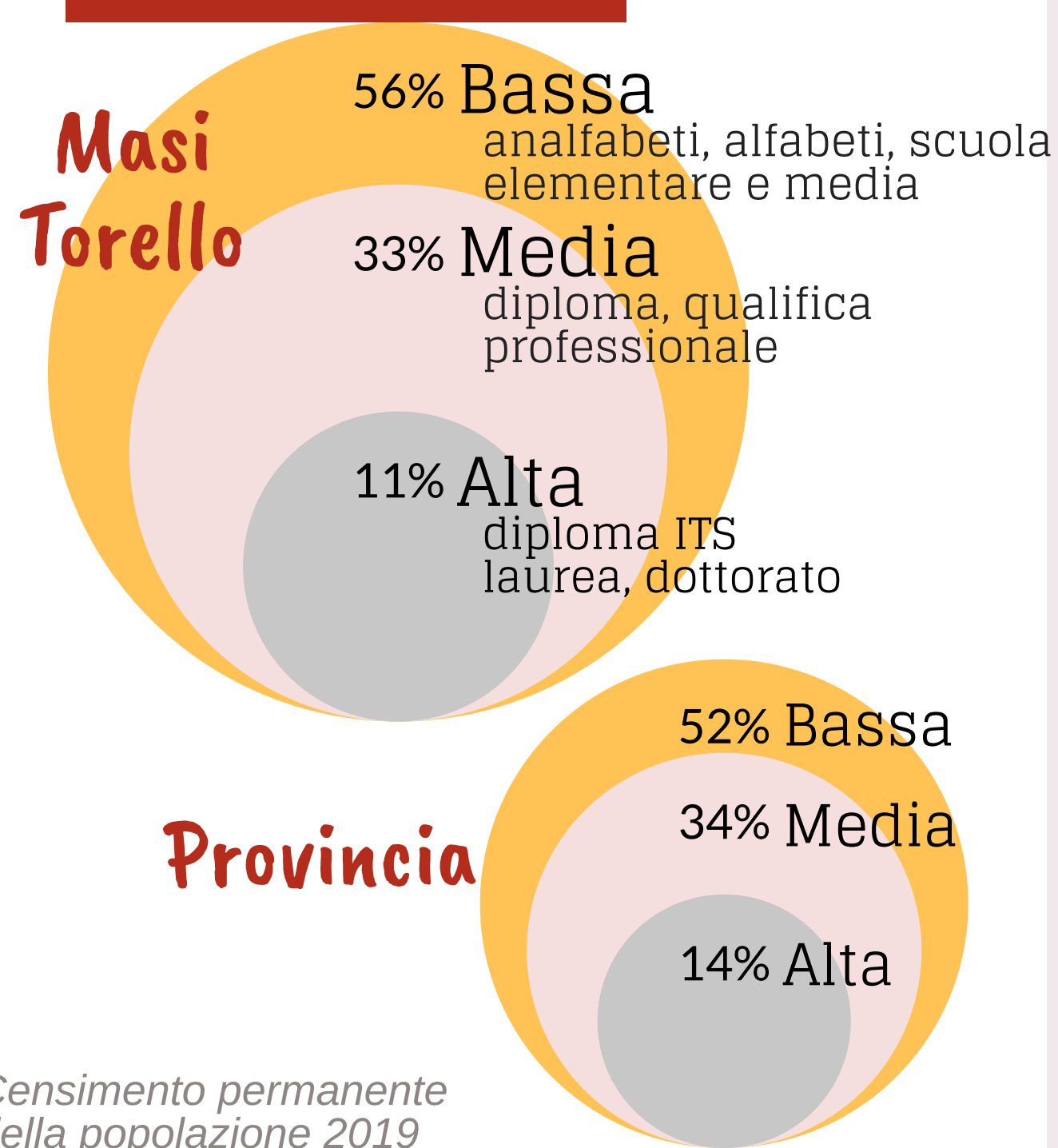


## LAVORO

Censimento permanente della popolazione 2019



## ISTRUZIONE



## SETTORI CON PIU' ADDETTI

Camera di Commercio di Ferrara

Ufficio Cultura e relazioni d'impresa

Largo Castello, 6 - 44121 Ferrara

Tel. +39 0532.783.935-936

statistica@fe.camcom.it

www.fe.camcom.it