

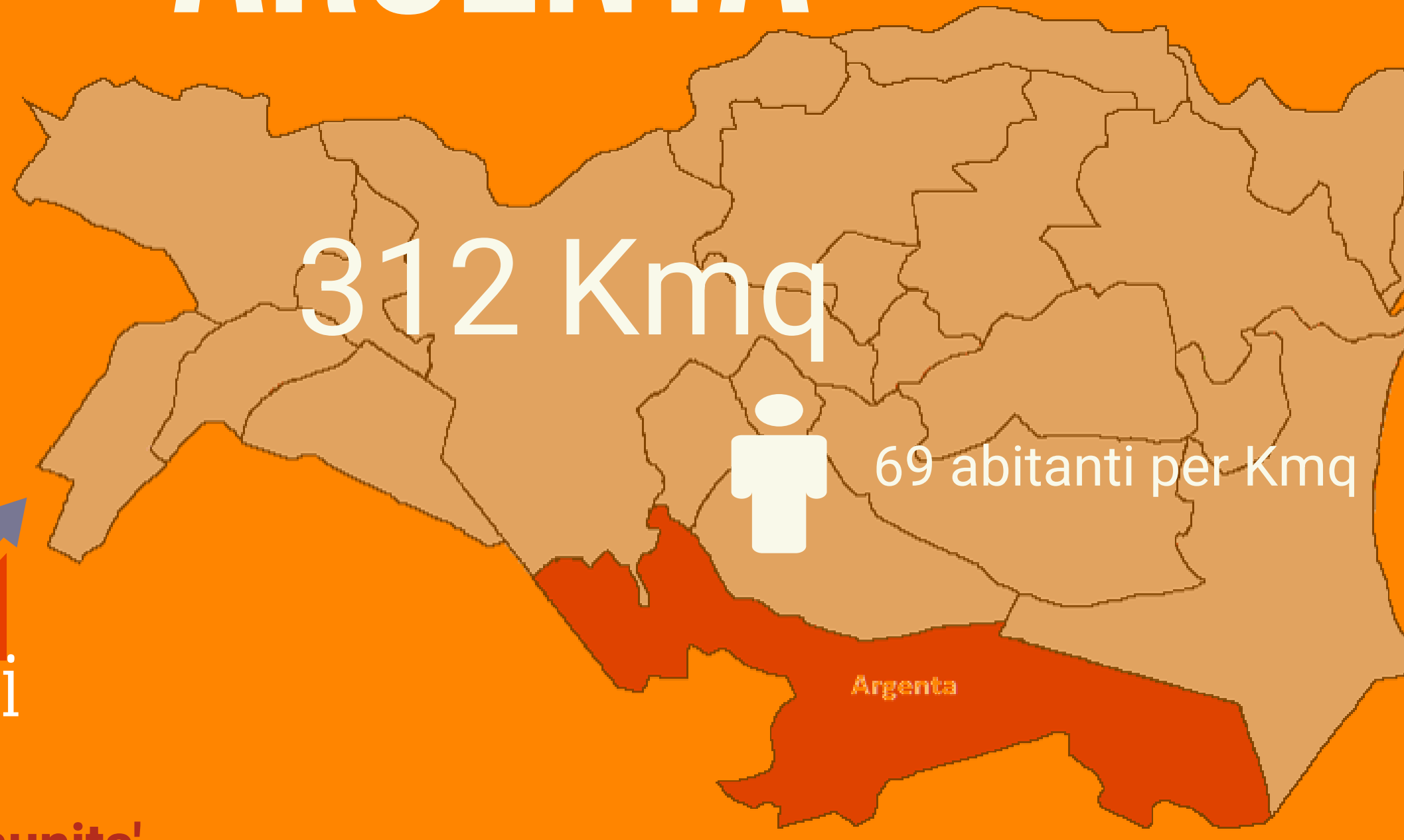


Camera di Commercio
Ferrara

ANNO 2020

ARGENTA

POPOLAZIONE



OVER 65
29%

UNDER 20
15%

20.949

2.322 stranieri

PAKISTAN
Prima comunità straniera

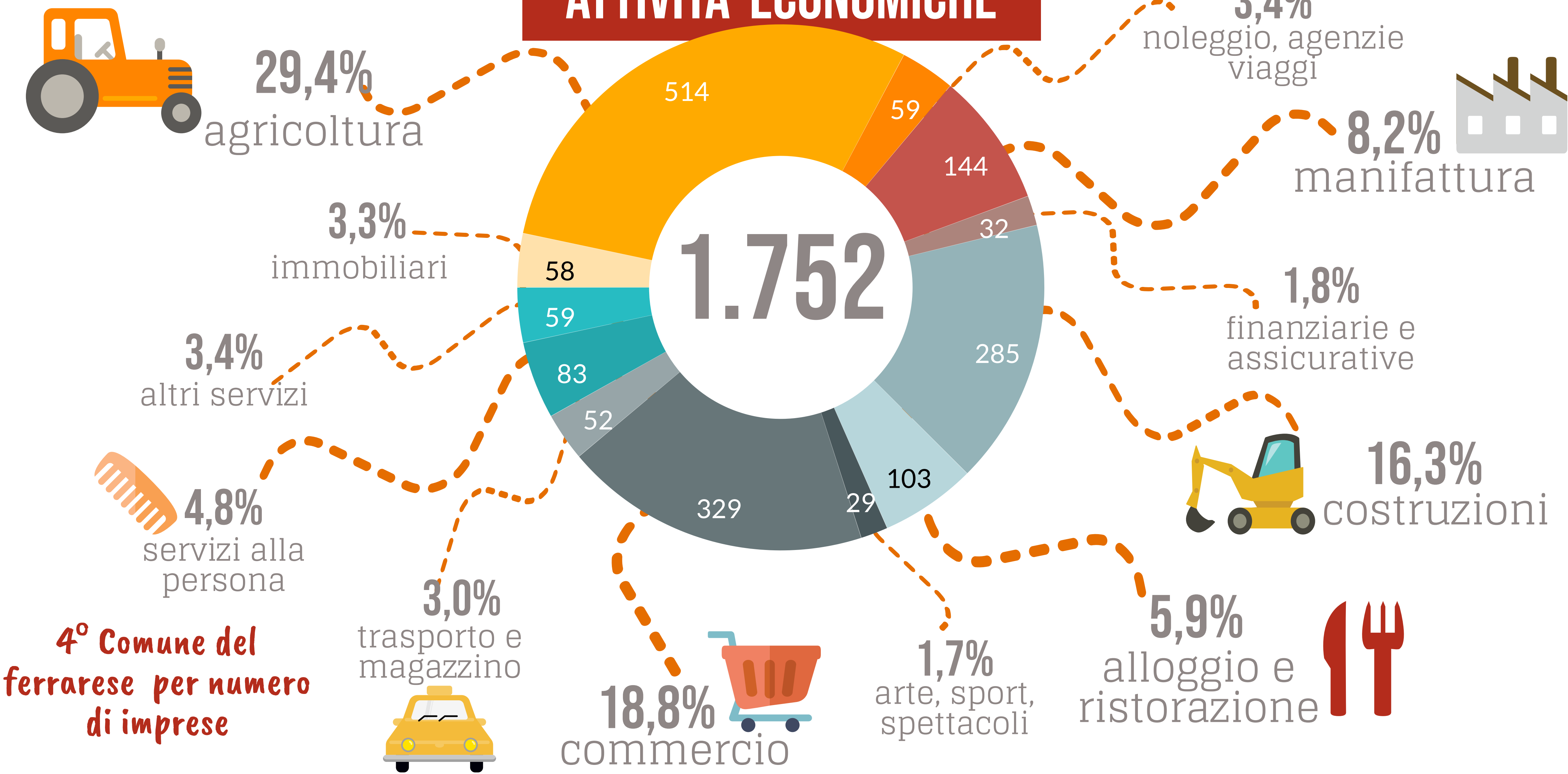
18.627 italiani

256 OGNI ANZIANI

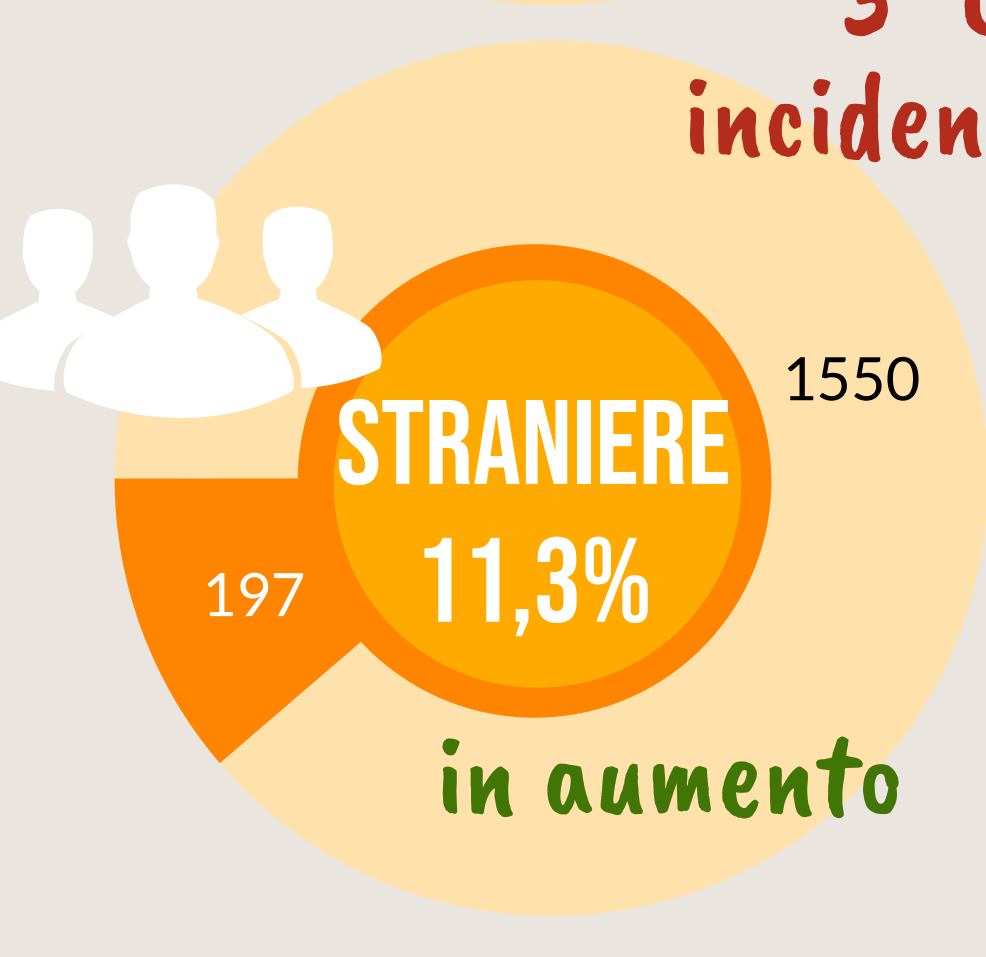
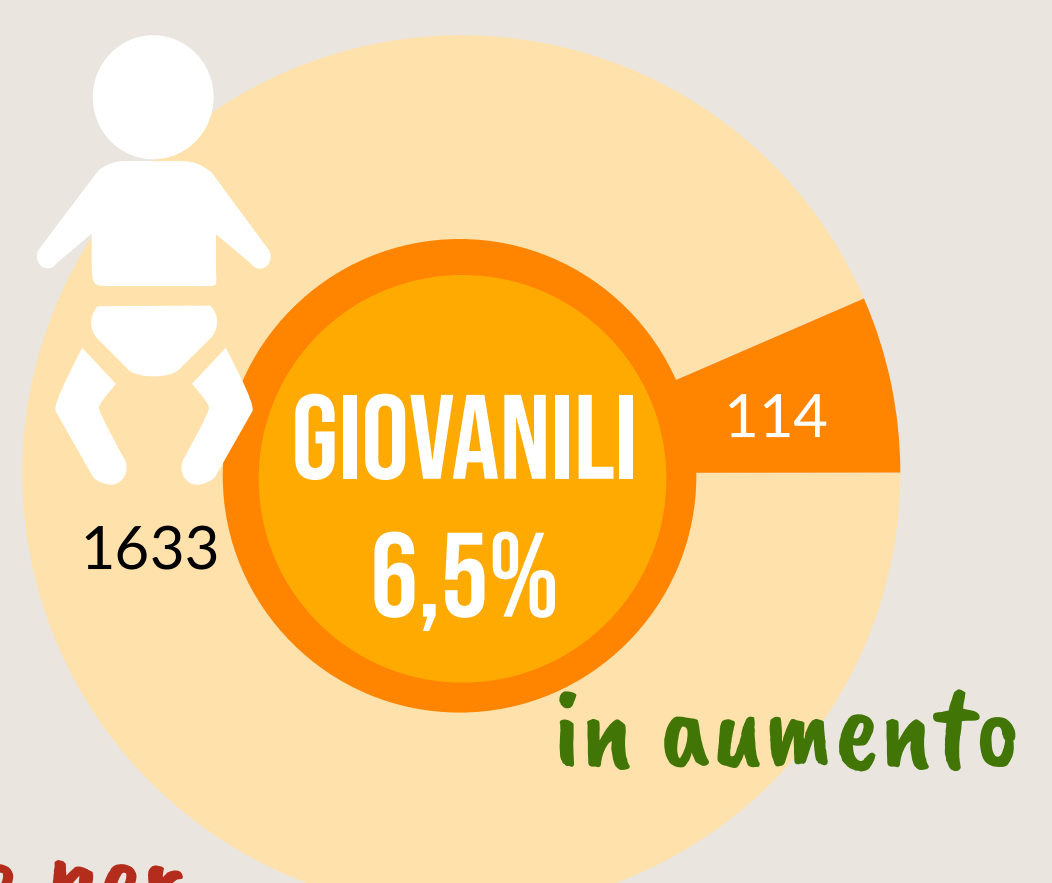
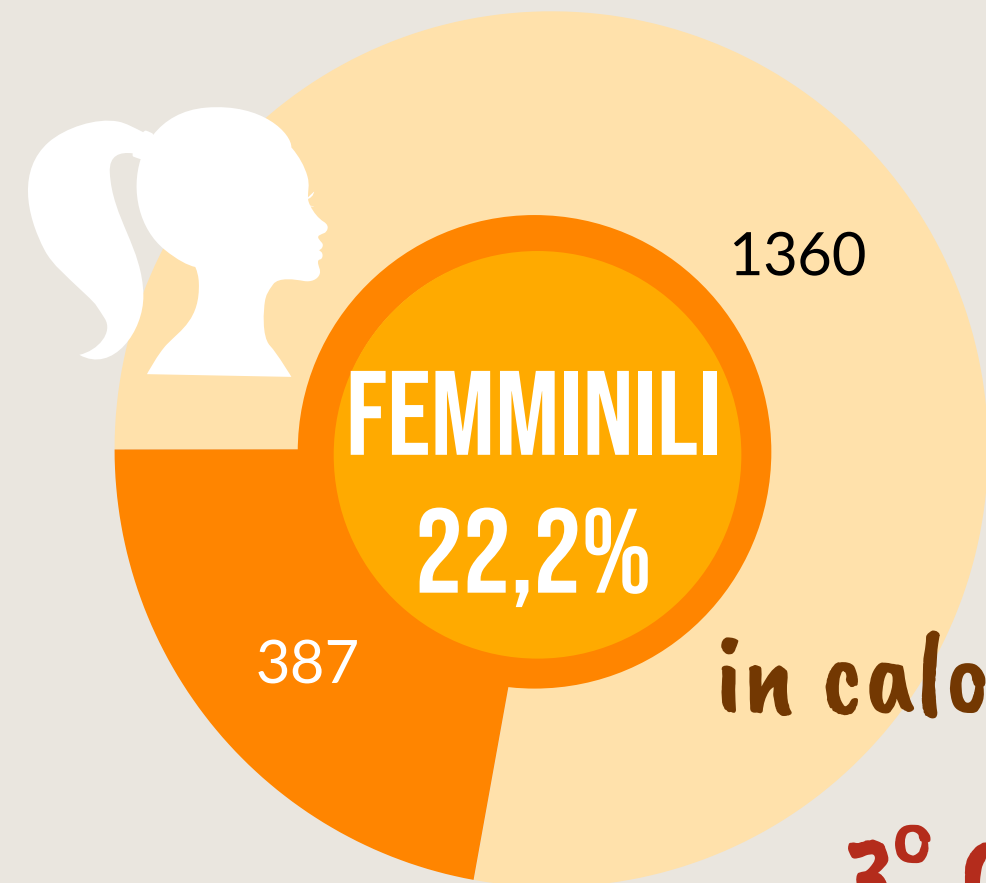
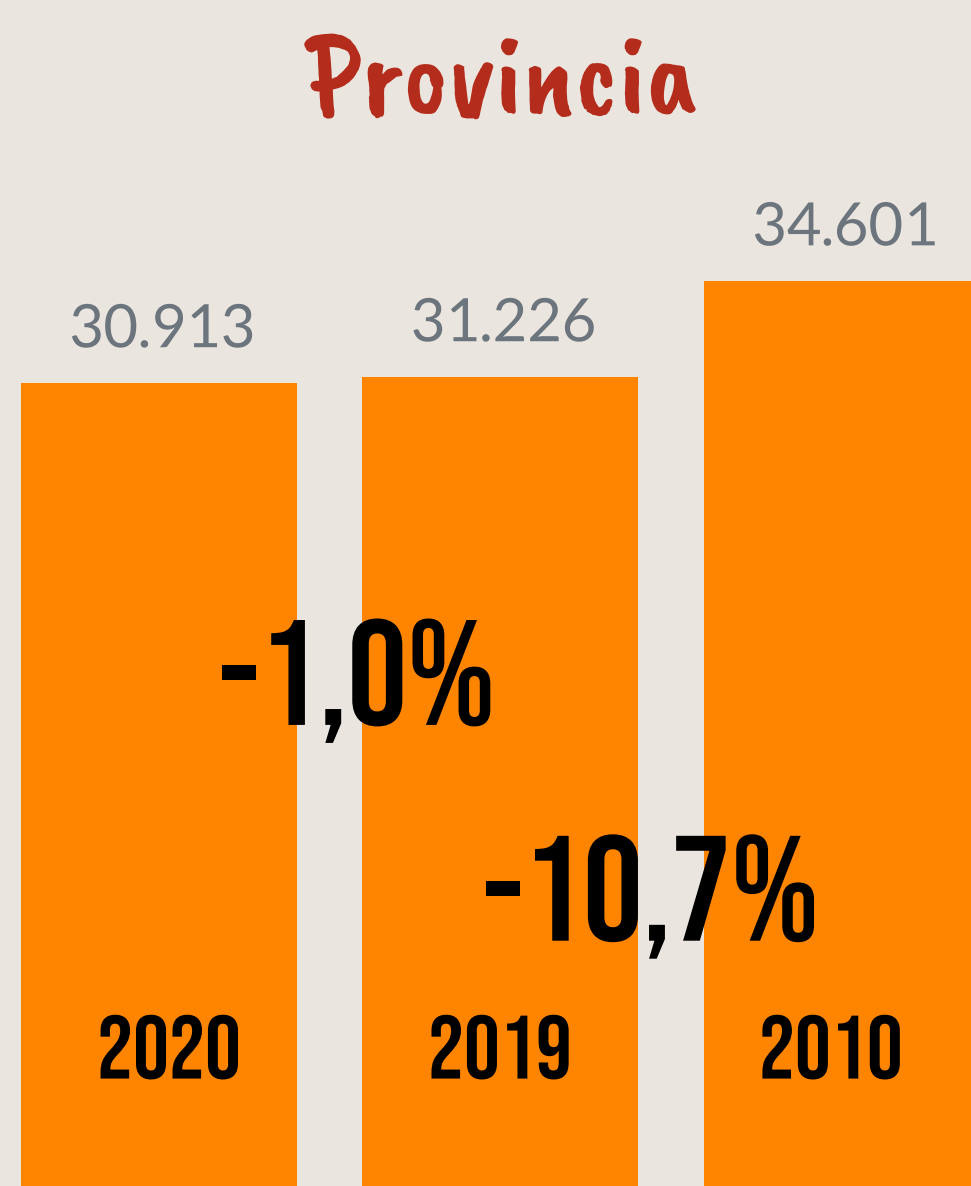
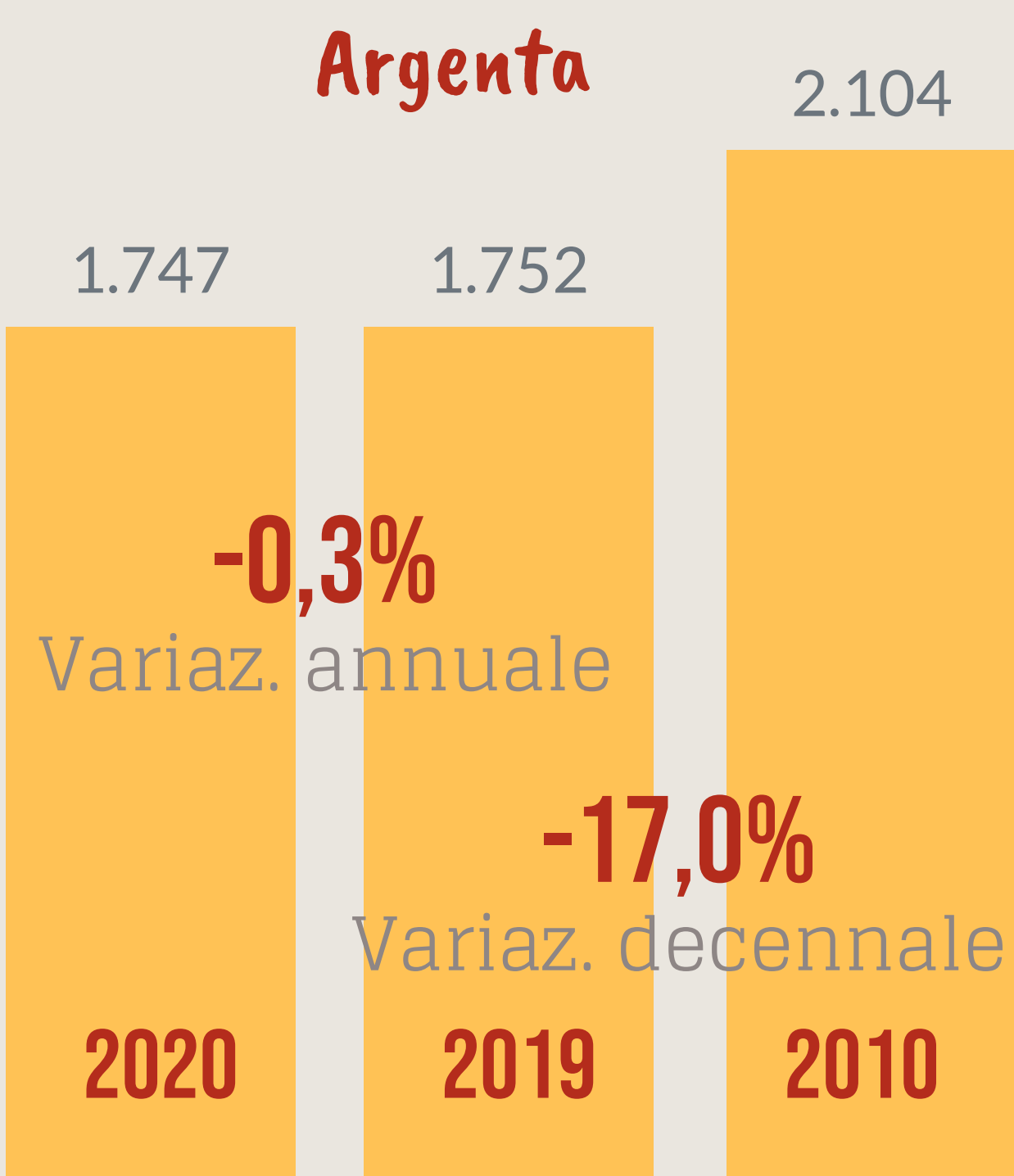
100 GIOVANI

Dati InfoCamere - Imprese Attive al 31/12/2020

ATTIVITA' ECONOMICHE



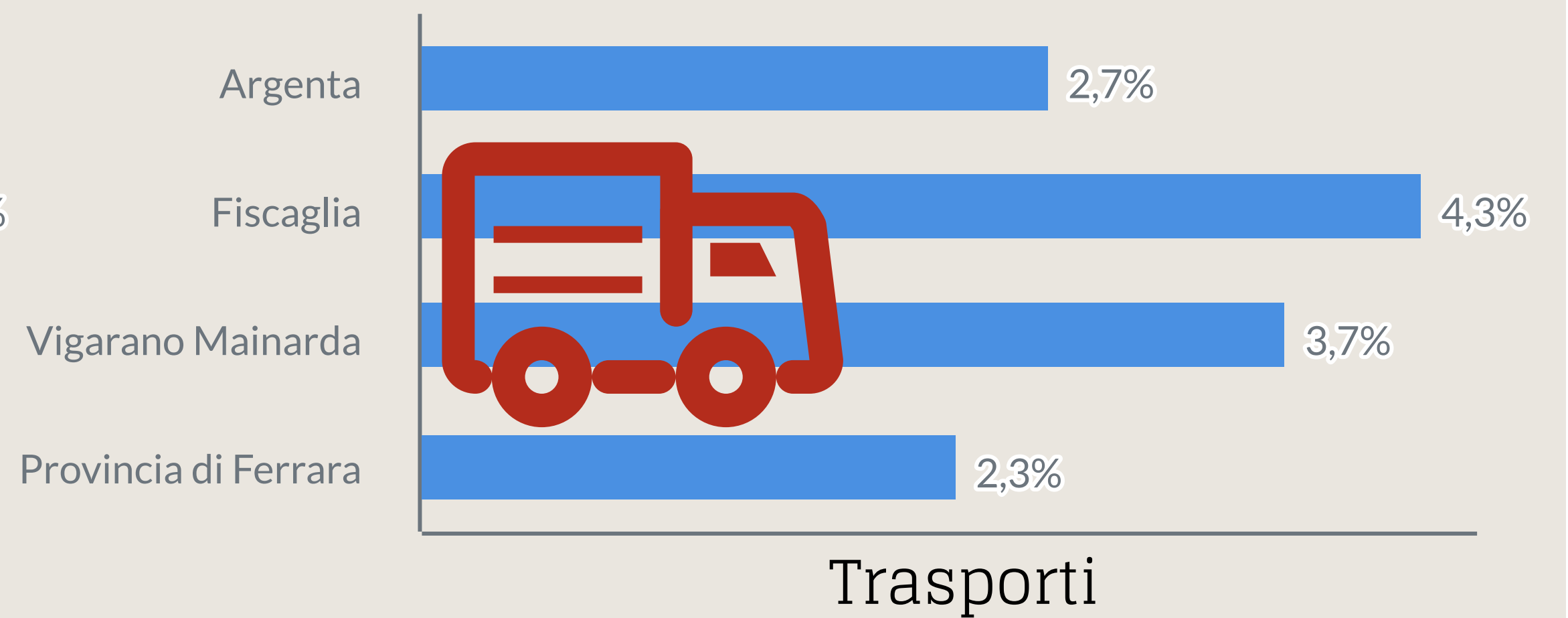
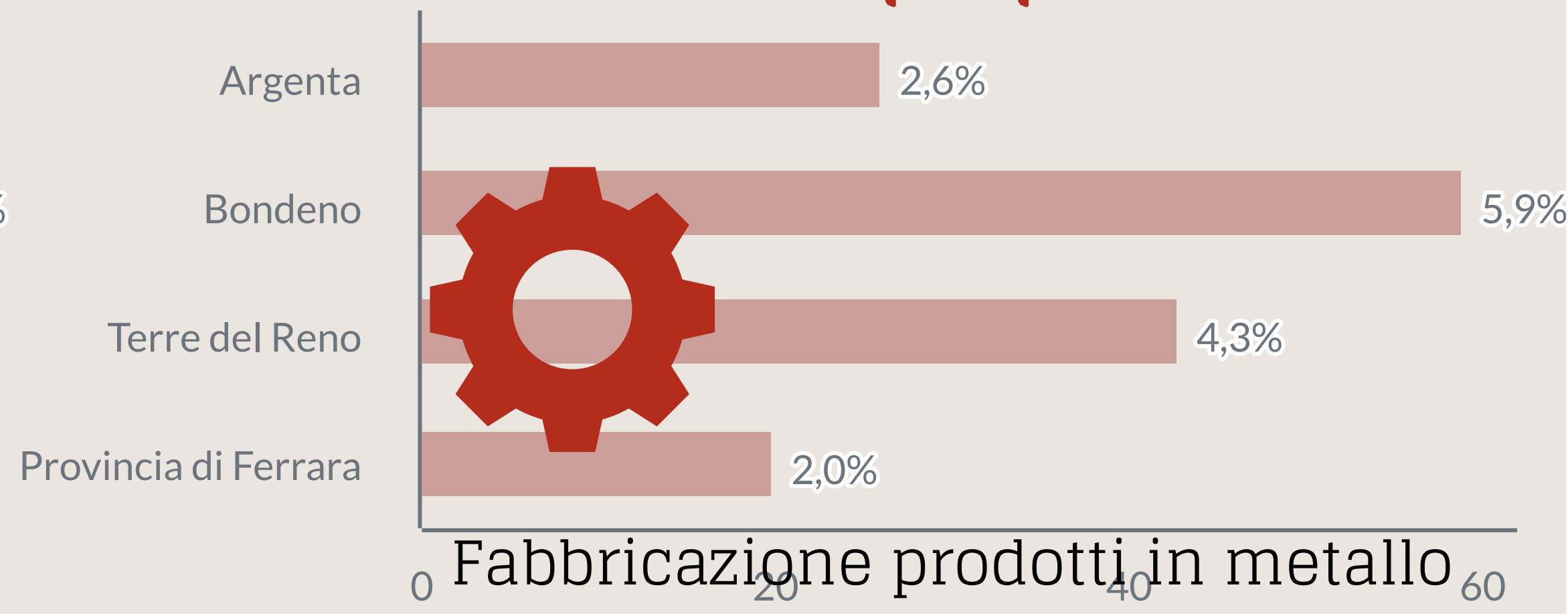
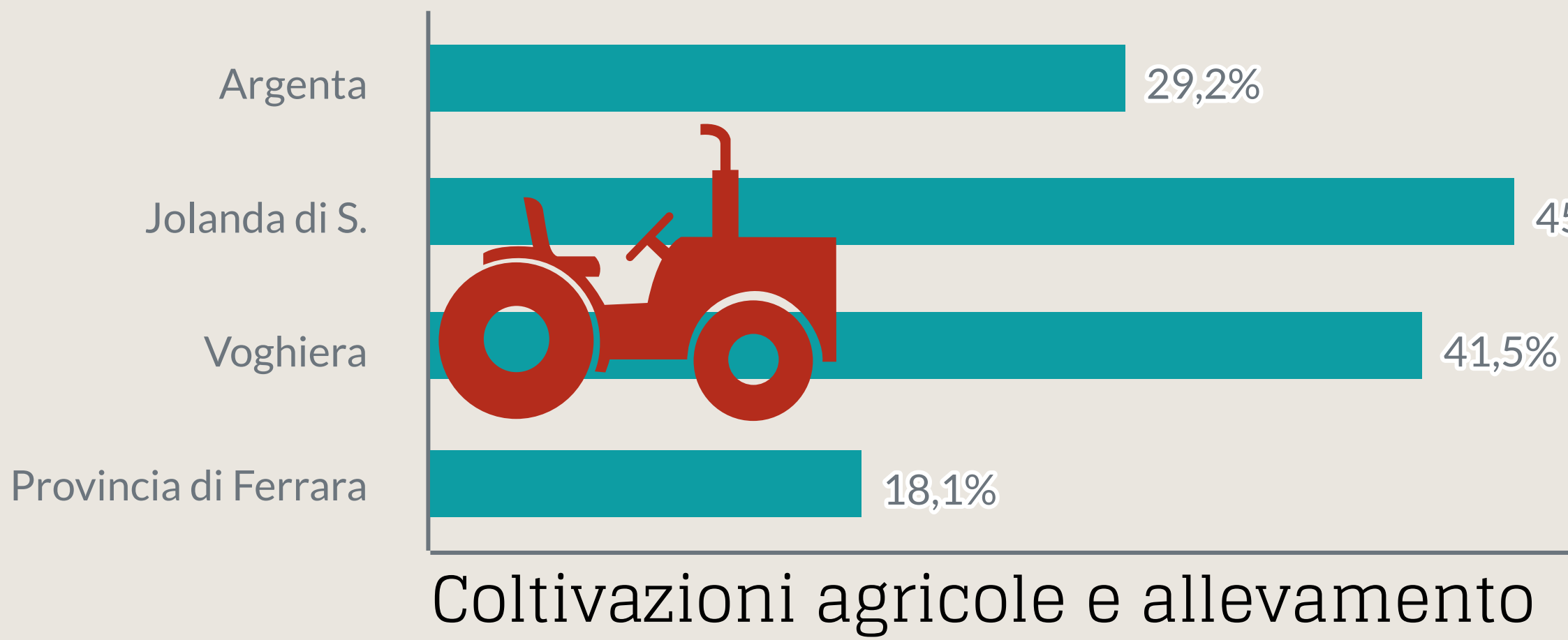
IMPRESE



3° Comune per incidenza di straniere

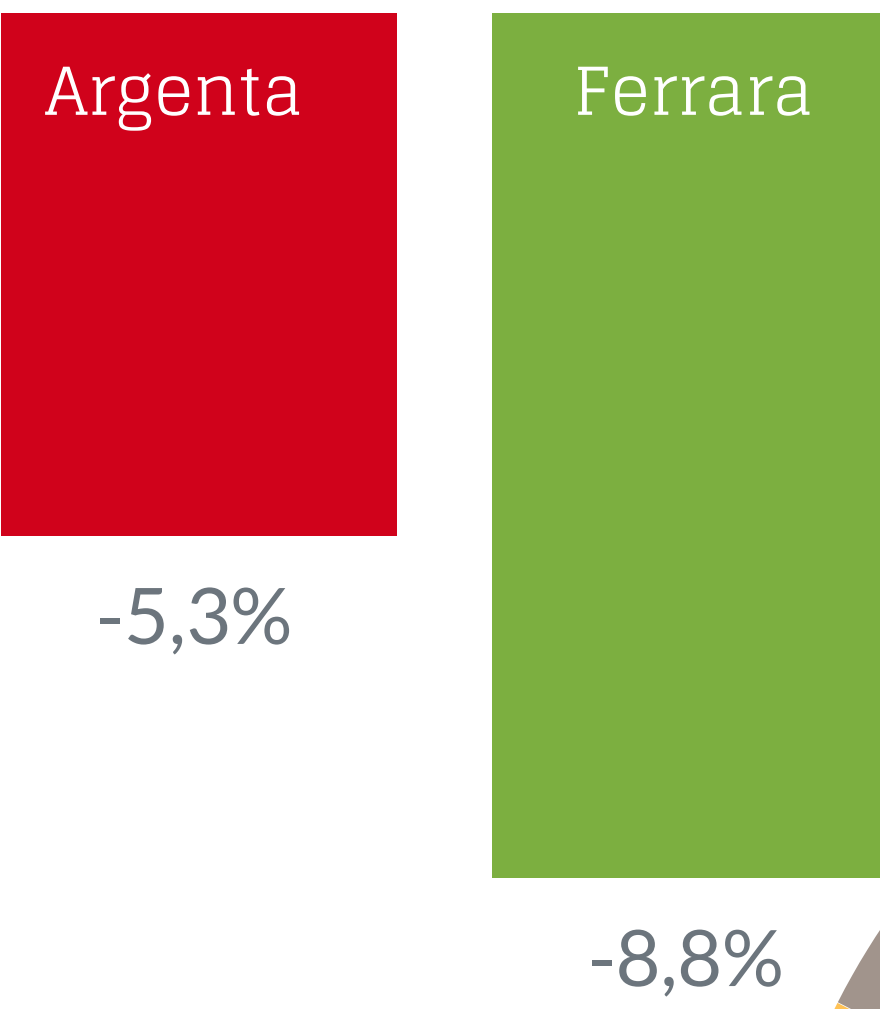
ATTIVITA' A CONFRONTO

% di imprese argentane rispetto ai comuni più specializzati



VALORE AGGIUNTO

Stima
Variazione 2020
su 2019



+4,0%

Fonte Unioncamere
Emilia-Romagna

0,0%

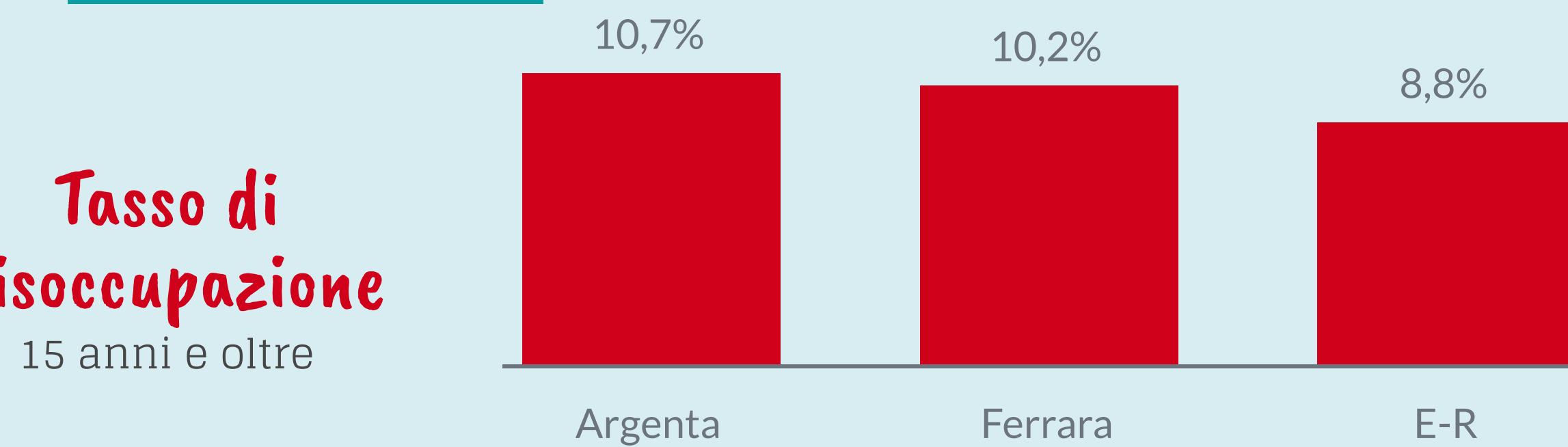
Previsione
Variazione 2022
su 2019



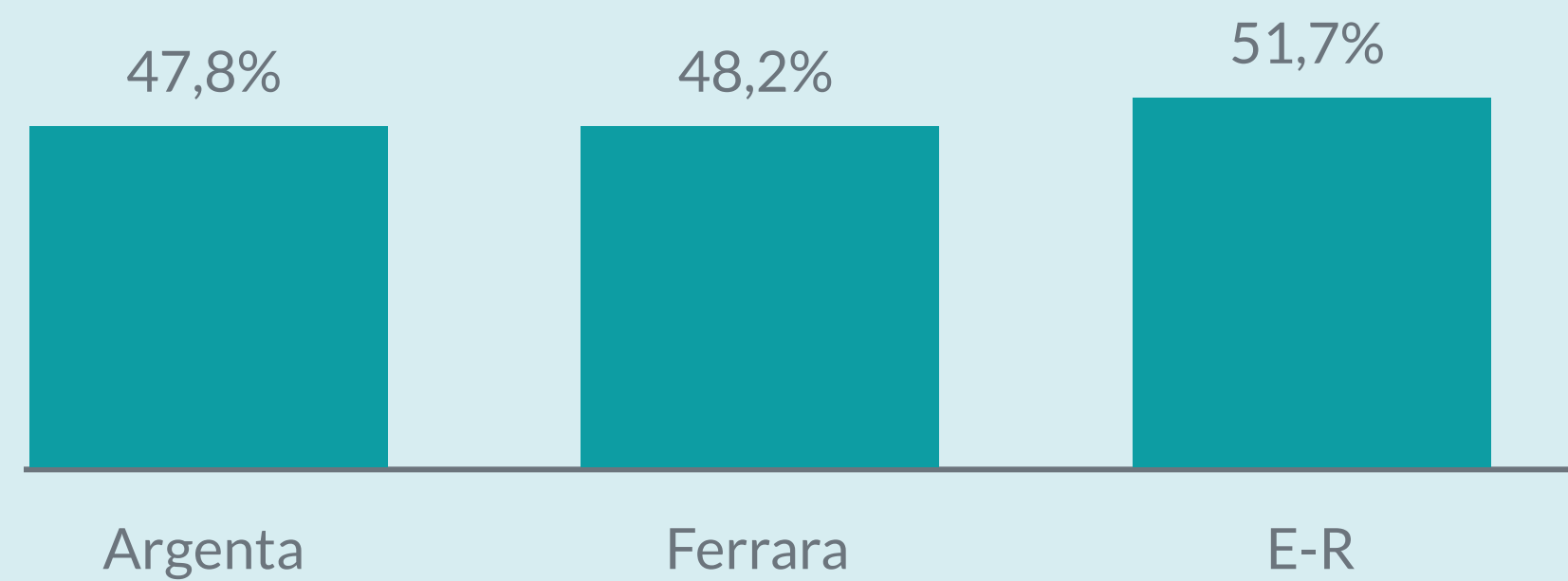
LAVORO

Censimento permanente della popolazione 2019

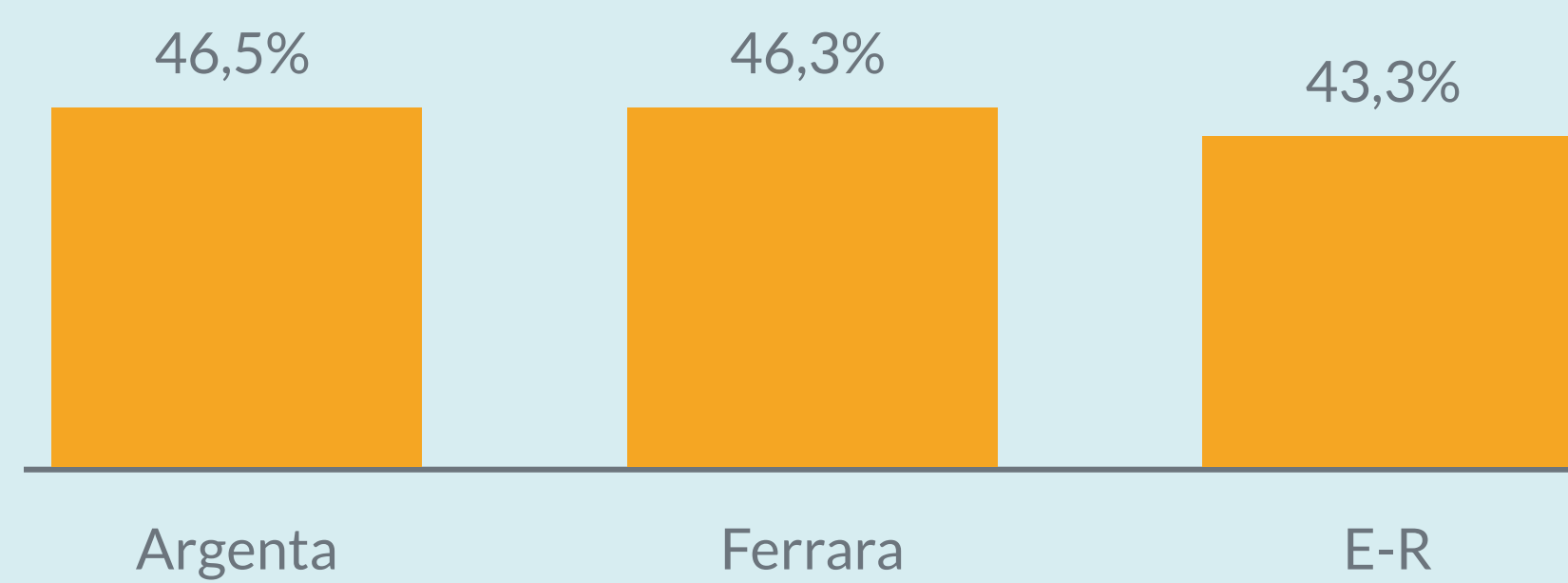
Tasso di
Disoccupazione
15 anni e oltre



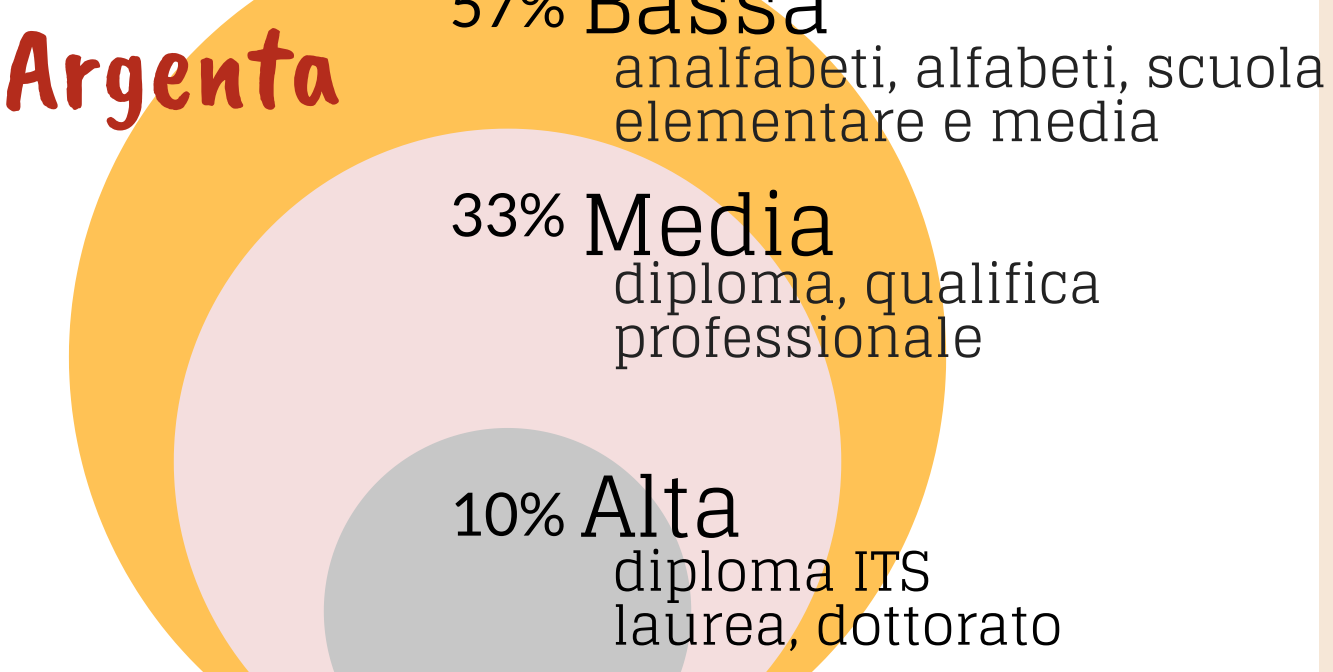
Tasso di
Occupazione
15 anni e oltre



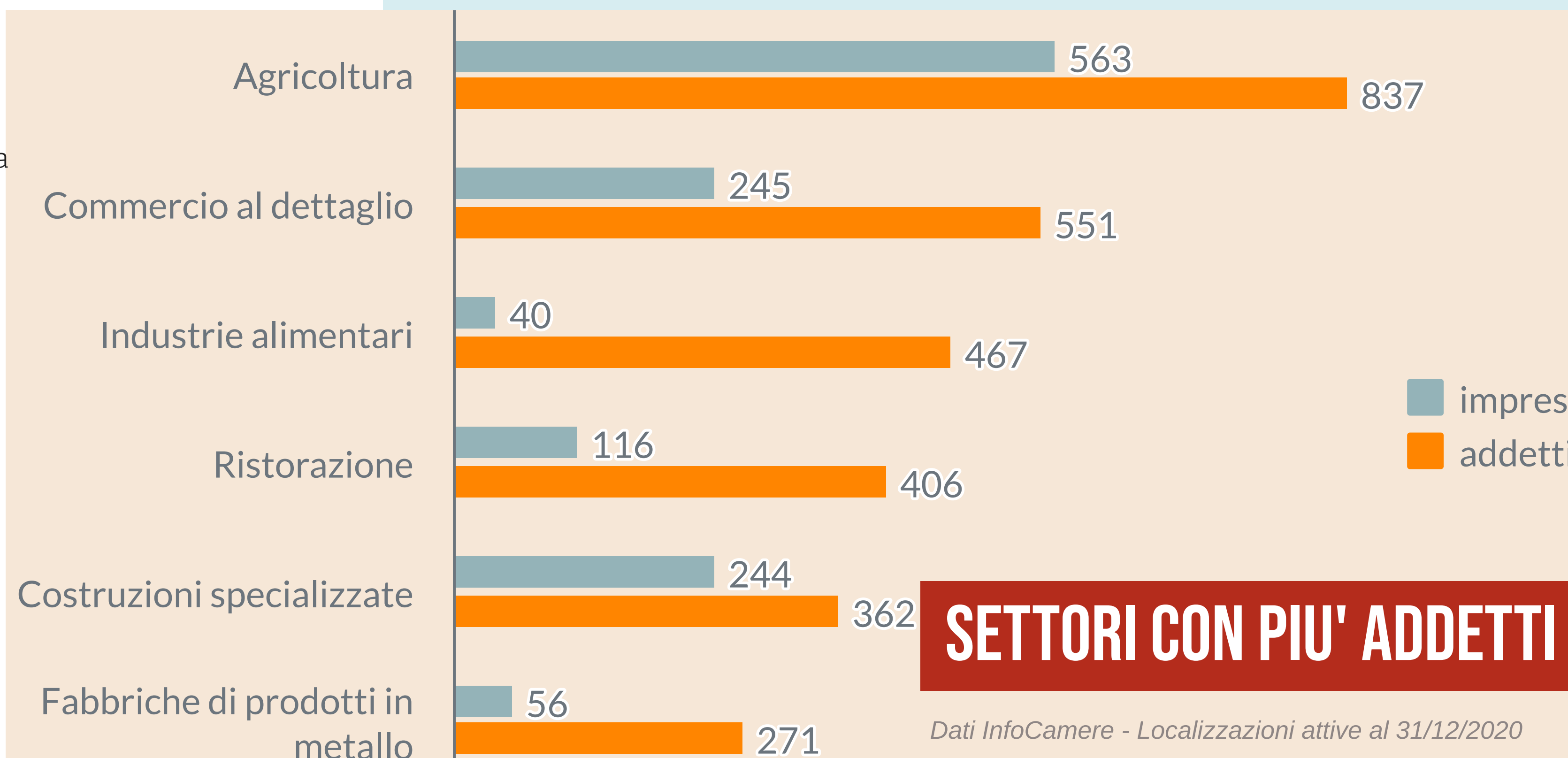
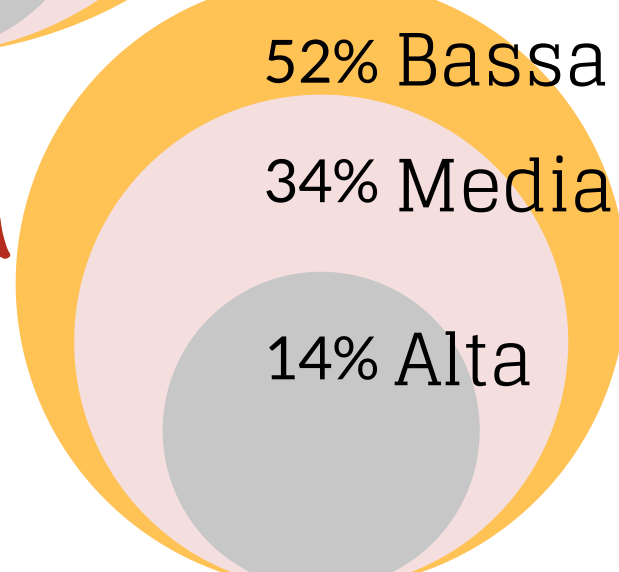
Tasso di
inattività
15 anni e oltre



ISTRUZIONE



Provincia



SETTORI CON PIU' ADDETTI

Dati InfoCamere - Localizzazioni attive al 31/12/2020

Censimento permanente della popolazione 2019



Camera di Commercio di Ferrara
Ufficio Cultura e relazioni d'impresa
 Largo Castello, 6 - 44121 Ferrara
 Tel. +39 0532.783.935-936

statistica@fe.camcom.it

www.fe.camcom.it